

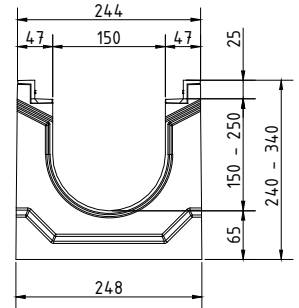
data sheet:

BGZ-S SV G NW150



1. Rinne / Channel:

BGZ-S SV G



Rinne / channel - Maße / dimensions				
Typ	Höhe A height A	Höhe B height B	Länge length	BG code G
0	240	240	1000	16600
0 (0,5m)	240	240	500	16630
1	240	245	1000	16610
2	245	250	1000	16611
3	250	255	1000	16612
4	255	260	1000	16613
5	260	265	1000	16614
5-0	265	265	1000	16601
6	265	270	1000	16615
7	270	275	1000	16616
8	275	280	1000	16617
9	280	285	1000	16618
10	285	290	1000	16619
10-0	290	290	1000	16602
11	290	295	1000	16620
12	295	300	1000	16621
13	300	305	1000	16622
14	305	310	1000	16623
15	310	315	1000	16624
15-0	315	315	1000	16603
16	315	320	1000	16625
17	320	325	1000	16626
18	325	330	1000	16627
19	330	335	1000	16628
20	335	340	1000	16629
20-0	340	340	1000	16604

Legende / explanation:	
V:	verzinkter Stahl / galvanized steel
G:	Gußbeisen-Zarge / cast iron edge
GJS:	Gußbeisen / ductil iron

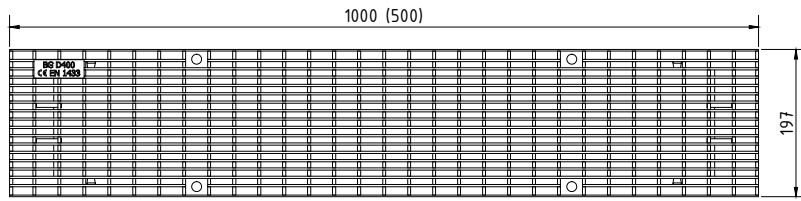
data sheet:

# BGZ-S SV G NW150

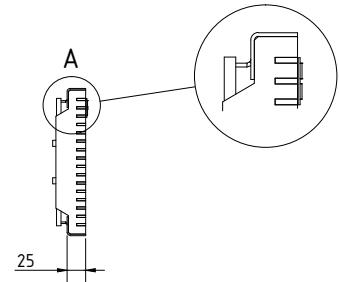


2. Gitterrost / Mesh grating:

D400kN MW30/10: V 23260 (23261)

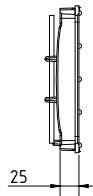
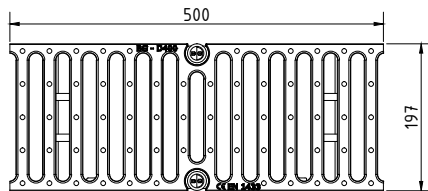


A ( 1 : 2 )



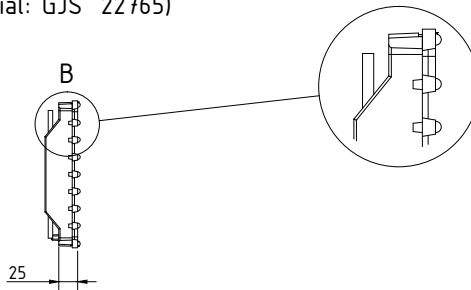
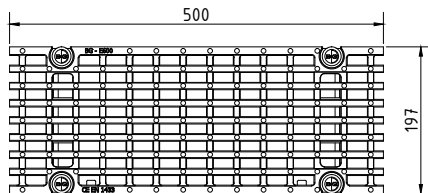
2. Gußrost / Ductile iron grating:

D400kN SW18/170: GJS 22066

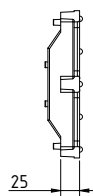
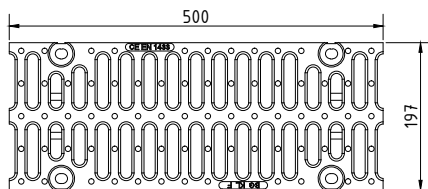


E600kN MW27/13: (mit SV / with SV: GJS 22764  
oder Verschraubungsmaterial / or bolting material: GJS 22765)

B ( 1 : 2 )



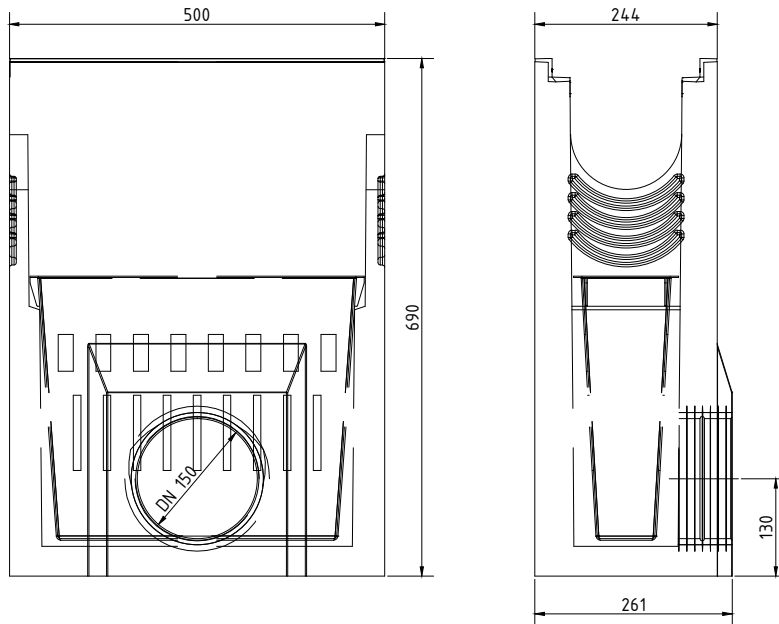
F900kN SW15/75: GJS 22063





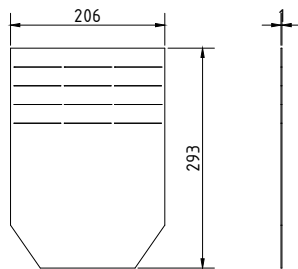
3. Sinkkasten / Sump unit:  
 (optional: Schlammeimer / Silt bucket: 22511)

G 22201

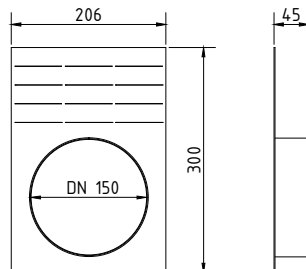


4. Stirn-/ Endplatte  
 / End cap:

V 22230

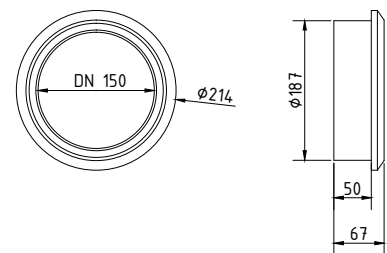


V 22231



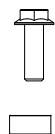
5. Forsheda-Dichtung  
 / forsheda sealing DN150:

31311



6. Verschraubungsmaterial / Bolting material

Gitterrost / Mesh grating:  
 V 22280



Gußrost / Ductil iron grating:  
 V 22281

